

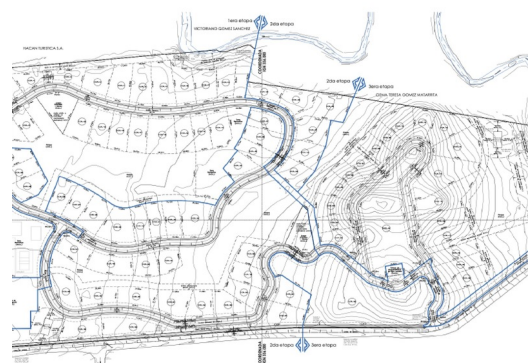
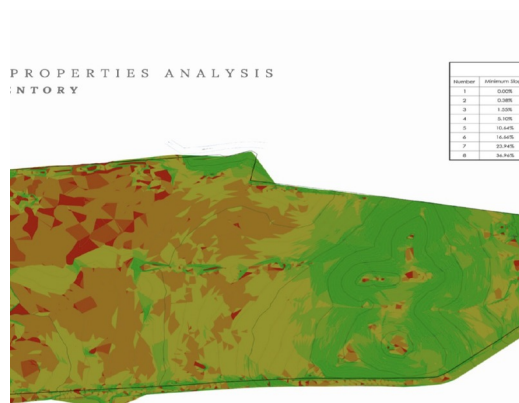
Avellanas Development Parcel

Avellanas, Guanacaste

\$7,900,000

ID: 18422

- Property Type: Land
- Size: 141640 sq m
- 35 Acres



- Status: Available
- Investment Opportunities
- Beach Properties
- Surfers Pick
- Development Farm

Property Description

This 14 hectares property is located in one of the most well known North Pacific destinations of Costa Rica, only 600 meters from the beach. This development parcel offers astonishing 180 degrees ocean views, 1.7 km of main road frontage, a gentle rolling hills topography, a small river and plenty of wildlife. Its privileged location provides an easy access; just 20 minutes from Tamarindo and 70 minutes from the international airport of Liberia. Having Lola's restaurant at just a short walk and a neighbor project that includes; a 5 stars J&W Marriott Hotel, an 18 holes Championship Golf Course, an exclusive beach club & restaurant, equestrian center with horseback riding, 2 tennis courts and 40km of mountain bike trails only 2 minutes away from the property within Hacienda Pinilla; Definitely offers tremendous potential for a high-end mixed-use development with stunning ocean views, close proximity to a beautiful white sand beach that is perfect for families to unwind on, swim, and enjoy, and a variety of world-class surfing opportunities, including Little Hawaii with nearly year-round perfect waves in Avellanas beach.

Additional

- ID 18422
- Available
- For Sale
- Land
- \$7,900,000
- View : Ocean

+506-4500-3820

Centro Comercial Plaza Tierra
Pacífica, Local #2, Junquillal, Santa
Cruz, Guanacaste, 50303



REAL ESTATE AGENT

Camille Bourlette

Camille Bourlette

[US Toll Free: 877-309-9238](tel:877-309-9238)

[Costa Rica Direct: +506-4500-3820](tel:+506-4500-3820)



COLDWELL BANKER
PACIFIC REALTY